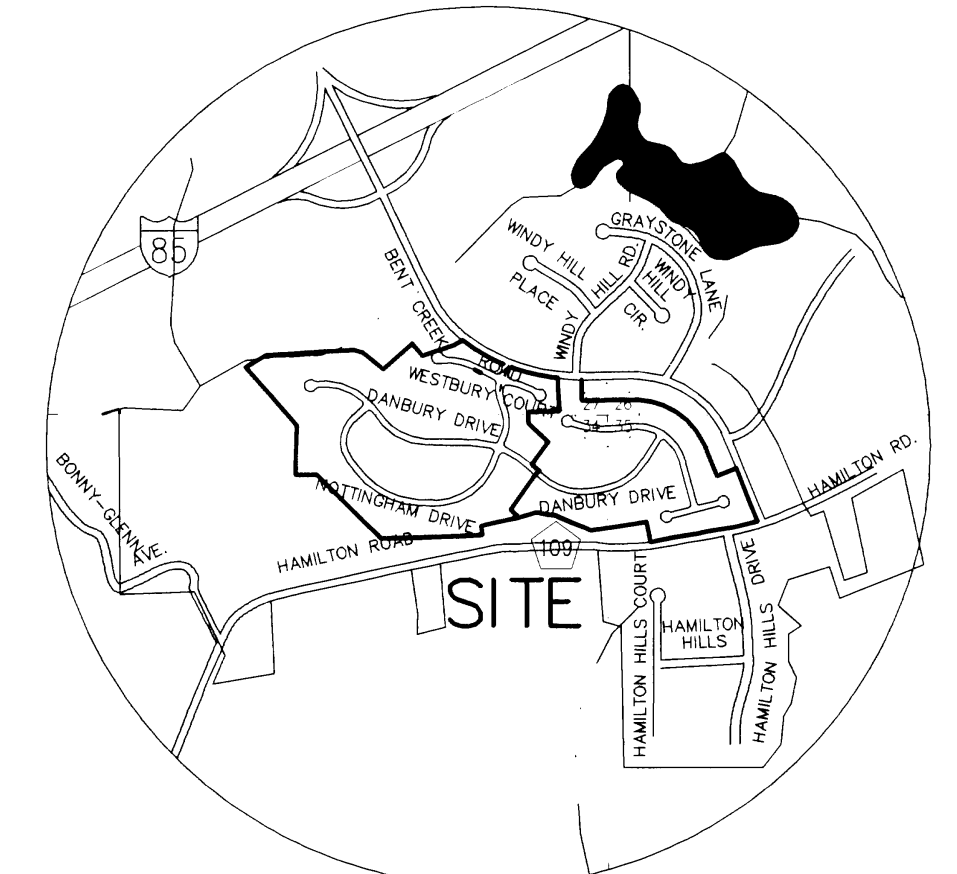


WHITE OAKS
PHASE TWO

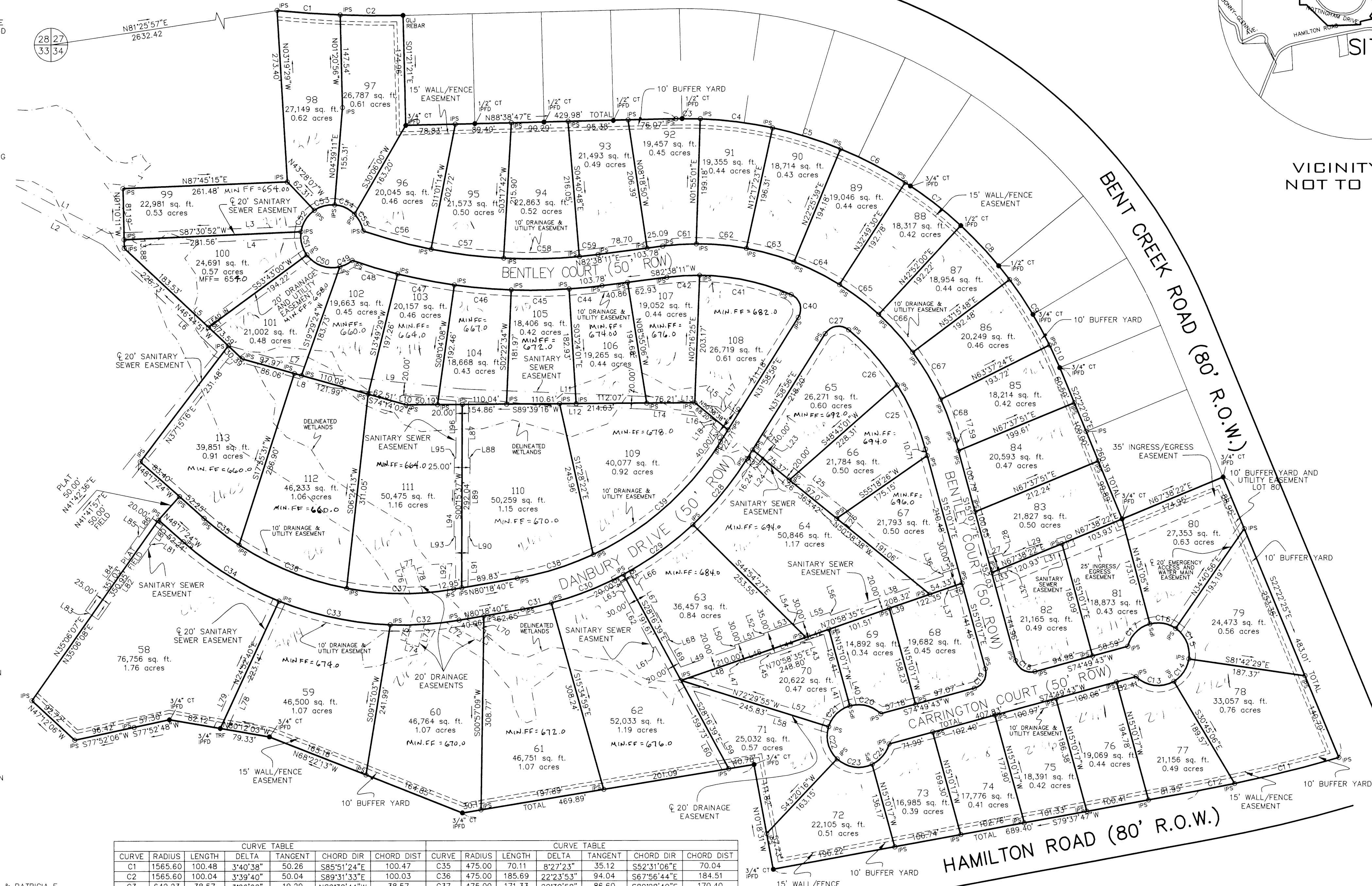
SEC 26, 27, 34, AND 35 T 19 N R 26 E
AUBURN LEE COUNTY ALABAMA

SCALE: 1"=100' JANUARY 10, 2007
GLENN N. GAYLOR, P.L.S., AL. REG. No 20890

BENT CREEK ROAD (80' R.O.W.)



VICINITY MAP
NOT TO SCALE



LEGEND table with symbols for SF, AC, R.O.W., IPFD, etc.

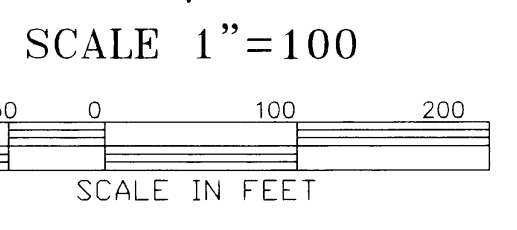
STATE OF ALABAMA LEE COUNTY... I, GLENN N. GAYLOR, A PROFESSIONAL LAND SURVEYOR OF ALABAMA, HEREBY CERTIFY TO THE BEST OF MY INFORMATION, KNOWLEDGE AND BELIEF...

NOTES: 1. BEARING BASED ON STATE PLANE COORDINATES ALA EAST ZONE, NAD 1983 ESTABLISHED BY GPS OBSERVATION. 2. SOURCES OF INFORMATION: BENT CREEK S/D, WINDY HILL SEC PB 9, PG 91 BENT CREEK S/D, WINDY HILL SEC PB 22, PG 162 WHITE OAKS PLAT, PLAT BOOK 24, PAGE 196.

ADJOINING PROPERTY OWNERS table listing owners like BARRON ALAN SHANE & CHRISTINA, BROWN SIDNEY C & CHARLENE M, etc.

CURVE TABLE with columns for CURVE, RADIUS, LENGTH, DELTA, TANGENT, CHORD DIR, CHORD DIST.

LINE TABLE with columns for LINE, LENGTH, CHORD DIR, CHORD DIST.



WHITE OAKS
PHASE TWO

SECS 26, 27, 34, AND 35 T 19 N R 26 E
AUBURN LEE COUNTY ALABAMA
SCALE: 1"=100'
GLENN N. GAYLOR, P.L.S., AL. REG. No. 20890

BURN PLAT BOOK 14 PAGE 55

Table with columns for SHEET NUMBER, FIELD BOOKPAGE, CREW CHIEF, JOB NUMBER.